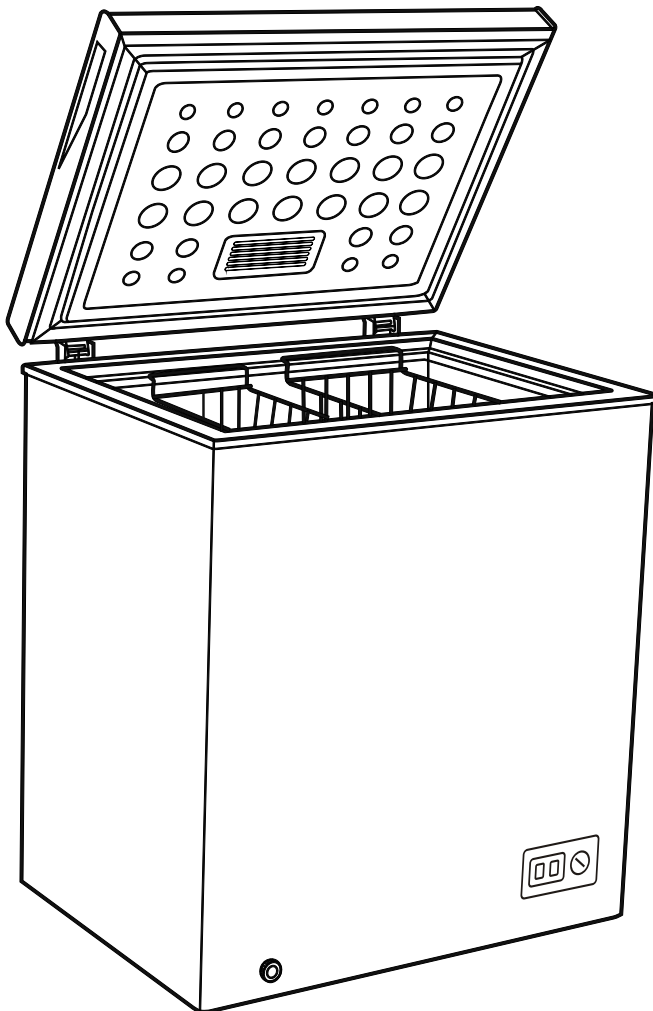




The Comfortable Choice

User Manual

CHEST FREEZER



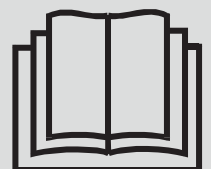
Model:
TCF145WMHH
TCF200WMHH

IMPORTANT NOTE:

Thank you for selecting a TECO quality chest freezer.

Read this manual carefully before installing or operating your new unit. Make sure to save this manual for future reference.

The design and specifications are subject to change without prior notice for product improvement. Consult with the sales agency or manufacturer for details.



- Thank you for purchasing our product and thank you for placing your confidence in us.
- Read this manual carefully before use. Follow instructions and keep the manual for future reference.
- Follow the operating instructions and safety notices in this manual.
- If any trouble arise, do not attempt to fix it yourself. Please contact TECO service on 1300 660 037 (8:30am - 4pm Mon~Fri AEST).
- This refrigerator is designed and approved for use with flammable R600a refrigerant.
- The appliance is specifically constructed for domestic use and is therefore suitable for the refrigeration and storage of frozen foods and the production of ice-cubes. The appliance has not been designed or manufactured for professional use. TECO declines all responsibility for damage deriving from improper use of the appliance. The refrigerator has undergone the necessary tests on the tightness of the refrigeration circuit and complies with the safety regulations for electrical appliances.
- All images, illustrations and photos contained in this manual are for illustration purposes only and may differ from your appliance.



WARNING

WARNING ICON

This symbol indicates information concerning your personal safety



CAUTION

CAUTION ICON

This symbol indicates information on how to avoid damaging the appliance



FLAMMABLE ICON



R600a

R600a WARNING LABEL

TABLE OF CONTENTS

- SAFETY INFORMATION 1
- NAME OF PARTS AND USAGE 3
- TRANSPORTING THE APPLIANCE 4
- INSTALLATION INSTRUCTIONS 4
- OPERATING INSTRUCTIONS 5
- DEFROSTING 7
- ENERGY SAVING TIPS 8
- MAINTENANCE 8
- DISCONNECTION OF THE APPLIANCE 9
- TROUBLESHOOTING 10
- SPECIFICATIONS 11
- REPAIRS, SERVICE & WARRANTY 12

SAFETY INFORMATION



R600a Isobutane Refrigerant

WARNING

- This appliance contains a small quantity of flammable , non-synthetic R600a refrigerant.
- Hydrocarbon refrigerants have excellent refrigerant properties and minimal low global warming potential and no ozone depletion potential.
- Hydrocarbon refrigerants cannot be ‘retrofitted’ to the appliance that has not been designed and approved to use that type of refrigerant.
- Ensure that the tubing of the refrigerant circuit is not damaged during transportation and installation.
- Leaking refrigerant may cause eye injuries or could ignite.
- The room for installing the appliance must be at least 1m³ per 8g of refrigerant. The amount of refrigerant in the appliance can be found on the rating plate attached to the appliance.

Risk of fire



WARNING

- If the refrigerant circuit should become damaged. Avoid open flames and sources of ignition. Disconnect the appliance from the mains power. Thoroughly ventilate the room in which the appliance is situated for several minutes.
- This appliance is not intended for use by persons (including children) with reduced physical, sensory or mental capabilities, or lack of experience and knowledge, unless they have been given supervision or instruction concerning use of the appliance by a person responsible for their safety.
- Young children should be supervised to ensure that they do not play with the appliance.
- The refrigerator is designed to operate on a single phase power supply within a voltage range of 220~240V/50Hz.
- This product is for indoor use only.

- The refrigeration system contains refrigerant. Do not allow any sharp objects to come in contact with the refrigerant system to avoid damage to the refrigerant circuit.
- Do not place electrical items or cooking equipment nearby. Keep away from substances which could cause ignition and ensure good ventilation is always available.
- Do not place objects on top of the appliance which are magnetic, heavy or filled with water.
- If the supply cord is damaged, it must be replaced by authorised TECO service personal, service agent or similarly qualified persons in order to avoid a hazard.
- Do not store flammable, explosive, volatile and highly corrosive materials in the refrigerator. Containers with flammable gases or liquids can leak at low temperature. There is a risk of explosion or fire.
- Do not splash water on the appliance. It may cause malfunction or electric shock.
- Do not place or operate any electrical appliance in the refrigerator.
- Always switch off and unplug the appliance before cleaning.

Safety of children

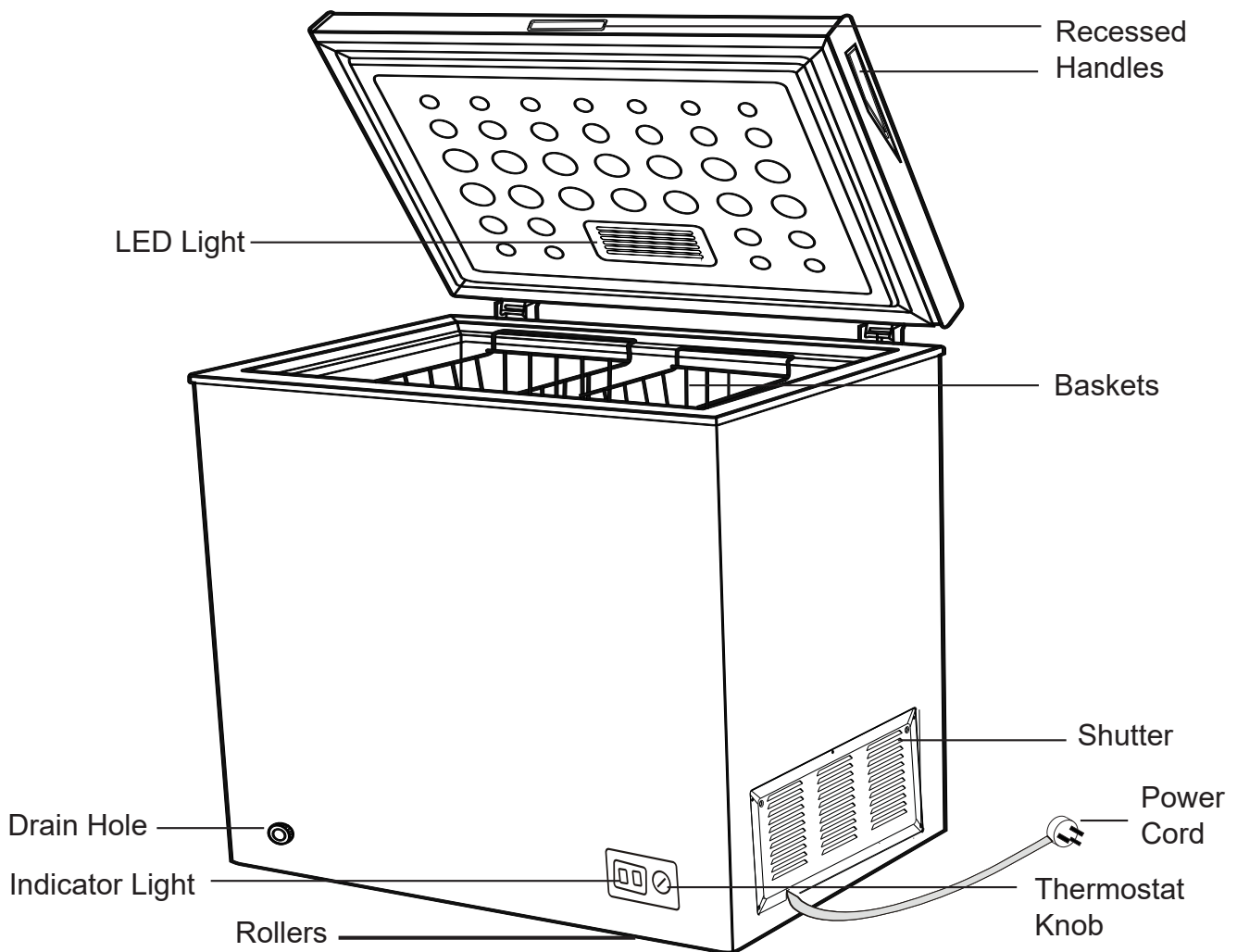


WARNING

- Packing (e.g. wraps, polystyrene etc.) can be dangerous for children. There is a risk of suffocation. Keep packaging materials away from children.

- Contact your local authorities for correct method of disposal.
- Dispose of all packaging in a responsible manner in accordance with local regulations.
- Dispose of old appliances in accordance with local regulations. Remove the doors, cut off the main cable, break or remove spring or bolt catches if fixed to prevent children trapped or involve themselves in other dangers.

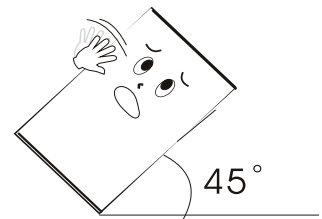
NAME OF PARTS AND USAGE



- The freezer you purchased is subject to continuous improvement, which may not be completely consistent with the manual, however the functions and operating methods will not change.
- If you use the freezer for the first time, remove any adhesive tapes.
- Do not pull or push the wire basket forcefully during use in case of damage.
- It is recommended to cut large pieces of meat into smaller pieces before storage for ease of access.
- Food should be consumed within the shelf life.
- Do not place large quantities of food into the appliance. For best results, it is recommended to leave space between items for air to circulate.

TRANSPORTING THE APPLIANCE

1. The appliance must be transported only in a vertical position. The packing must be intact during the transportation.
2. When unpacking and re-packing the appliance, please memorise the position of each accessory of the appliance when unpacking it. When re-packing the appliance for transportation, ensure all accessories are secured before transportation.
3. Do not lift or pull the lid during transportation

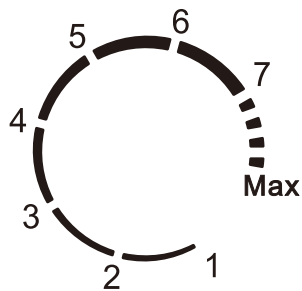


INSTALLATION INSTRUCTIONS

1. When moving the appliance, do not tilt >45 degrees (the angle of the vertical direction). Please avoid strong vibration and impacts that could cause damage to the appliance.
2. The freezer should be located on a firm and flat surface. An uneven surface may cause excess operating noise or vibration.
 - (a) The noise may be increased if the floor is not firm.
 - (b) If the appliance is to be positioned on carpet flooring and heat emitted from the appliance is a concern, place a solid sheet under the appliance.
3. Choose a location which is not exposed to sunlight, high temperature or humid, as humidity may cause staining.
4. It is recommended a clearance of at least 130mm away from objects and walls on both sides and back. Ensure the clearance above the appliance is not less than 700mm from the closed lid position and 90° clear for the lid to swing open.
5. Remove all internal packaging before operating.

OPERATING INSTRUCTIONS

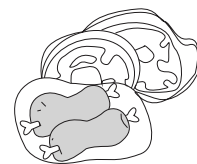
TEMPERATURE SETTING



- Set the temperature, on the temperature control knob.
Position 1 - Cold Position
Position 5 - Colder. Normally setting at this position.
Position 7 - Coldest.
Position Max - For fast freeze. After using the freezer for 24 hours reset the freezer to your desired setting.
- The appliance may not operate at the correct temperature if it is in direct sunlight or a hot environment or if you open the freezer door too often.

PLACEMENT OF FOOD

1. There should always be some space between items inside for air circulation.
2. Food should be kept in sealed packaging to avoid becoming dry or spoilt.
3. Hot food should be cooled down before placing into the appliance. Otherwise, the interior temperature and power consumption will increase.
4. Reduce opening the lid frequently.
This will increase the appliance efficiency and reduce power consumption.



WARNING

Do not use any electronic equipment inside the appliance.

NOTE:

- For safety reasons, if the unit is switched off / unplugged, the compressor will take a few minutes to return to normal operation.
- Large amounts of food will lower the cooling efficiency of the appliance.
- If you choose to change the thermostat setting, adjust thermostat control by one numerical increment at a time. Allow several hours for temperature to stabilize between adjustments.

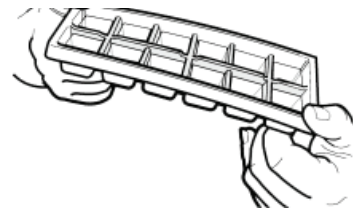


Do not store objects which are costly or subject to temperature variations. e.g. medication or chemicals.

WARNING

ICE MAKING

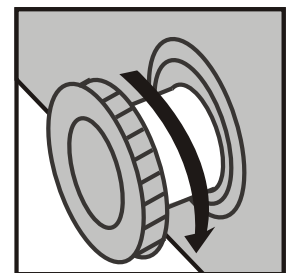
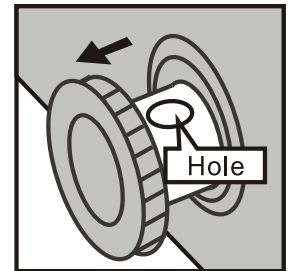
To make ice cubes, fill an ice tray (not supplied) with potable water and place it in the freezer. To remove ice cubes easily, run water on the tray before gently twisting and inverting the tray.



DEFROSTING

Heavy frost will effect the refrigerating process or internal temperature of the appliance and increase the power consumption. Thus, defrosting is required if the frost is >5mm thick. Defrosting is a manual process. Please follow these steps:

1. Switch off and disconnect the appliance.
2. Remove all food from the freezer compartment.
3. Remove the wire basket(s).
4. Open the lid and wait for the ice to defrost.
5. During defrosting, the ice melts into the cabinet.
6. Remove the drain plug on the inside floor of the freezer by pulling straight out.
7. For draining, place a shallow tray beneath the outer drain plug. Pull out the drain dial. Rotate the drain dial 180 degree with the hole face downward. This will let the water flow out in the tray.
8. Check the tray occasionally so the water does not overflow.
9. When de-icing, a scraper or plastic utensil (supplied) may be used. Never use metal instruments or electrical appliances to de-ice the freezer.
10. To speed up the defrosting process, you can place a bowl of hot water in the compartment and close the lid.
11. Clean the interior of the freezer.
12. Push the drain dial in. Replace the plug on the inside floor.
13. Restore power and allow the cabinet to cool for at least one hour.
14. Replace the wire basket and food.
15. Switch on the Fast Freeze for a minimum of 2 hours.
16. Reset the thermostat to desired setting.



Do not use an electric heater or hair dryer to increase the defrost process. It may destroy the cooling system.

CAUTION

ENERGY SAVING TIPS

1. Adjust the temperature control to a setting that is acceptable for the storage of the food. This will reduce the power consumption.
2. Only open the lid when required. Frequently opening the lid will increase power consumption.
3. Maintain good air circulation within the freezer.

MAINTENANCE

The appliance should be maintained and cleaned frequently. For your safety, pull the plug out of the socket before cleaning.

1. Interior and exterior maintenance
 - Clean the interior of the appliance with clean water and wipe it dry with a piece of dry cloth.
 - Cleansers such as soap powder, abrasive cleaning powder, alkali cleansers, chemical cloth, thinners, alcohol, acid petroleum products and hot water should not be used to clean the freezer as they may damage the painted cover and plastics.
2. Smearing can age the interior plastic components, so remove it as soon as possible.
3. Wipe the lid gasket clean, it is easy to damage the lid gaskets if polluted by stains, e.g. oil, sauce, etc.
4. Please check the points below after maintenance:
 - (1) Is there any damage or loss of the power lead?
 - (2) Can the power plug be inserted into the power socket correctly?
 - (3) Is the power plug and/or lead heating up?



Please remove the gasket from the lid before disposing. The disposed apparatus should be handled by professionals, as it may be harmful to the environment. If disposal is necessary, please contact your local authorities for correct method of disposal. Dispose of all packaging in a responsible manner in accordance with local council regulations.

DISCONNECTION OF THE APPLIANCE

If a power failure occurs, even in summer, the freezer could store food normally for some time.

1. Power failure

During a power failure, do not put additional food in the appliance and reduce opening the lid frequently.

Place ice cubes into the freezer if power failure is anticipated beforehand, and place it in the top of the freezer.

2. Power failure during vacation

Before departure of short vacation, remove any items that could spoil if a power failure occurs. Ensure the lid is closed firmly.

If going on a long vacation, remove all items, defrost the appliance, clean and wipe dry the internal of the appliance, prior to disconnecting the power and leave the lid open.

3. Storage of appliance

If the freezer will be stopped for a long period of time (storage), remove all items, defrost the appliance, clean and wipe dry the internal of the appliance, unplug the appliance from the power outlet. The lid should be kept open in order to prevent unpleasant odours.



WARNING

After unplugging the appliance from the power outlet, please leave at least 5 minutes before reconnection.

TROUBLESHOOTING

| Problem | Possible cause | Solution |
|---|---|--|
| Appliance does not work | Mains plug is not plugged in or is loose | Insert mains plug. |
| | Fuse has blown or is defective | Check fuse, replace if necessary. |
| | Socket is defective | Mains malfunctions are to be corrected by an electrician. |
| Appliance freezes too much | Temperature is set too cold or the appliance runs at MAX setting. | Turn the temperature regulator to a warmer setting temporarily. |
| The food is not frozen enough. | Temperature is not properly adjusted. | Please look in the initial Temperature Setting section. |
| | Door was open for an extended period. | Open the door only as long as necessary. |
| | A large quantity of warm food was placed in the appliance within the last 24 hours. | Turn the temperature regulation to a colder setting temporarily. |
| | The appliance is near a heat source. | Please look in the installation location section. |
| Heavy build-up of frost on the door seal. | Door seal is not air-tight. | Carefully warm the leaking sections of the door seal with a hair dryer (on a cool setting). At the same time shape the warmed door seal by hand such that it sits correctly. |
| Unusual noises | The appliance is touching the wall or other objects. | Move the appliance slightly. |
| | A component, e.g. a pipe, on the rear of the appliance is touching another part of the appliance or the wall. | If necessary, carefully bend the component out of the way. |

The following cases are not malfunctions:

- Moisture may form as condensation on the outside of the appliance during humid conditions. To remove excess moisture, wipe clean.
- The flow of refrigerant through the pipeline coil could cause gurgling, similar to water boiling. This is the normal function of the appliance.
- It is normal that the sides of the appliance will get warm as a result of the refrigeration system operation.
- Do not place objects on top of the appliance which are magnetic, heavy, or filled with water.
- The appliance operation could cause electrical interference to electrical equipment.

SPECIFICATIONS

| Model | | TCF145WMHH | TCF200WMHH |
|--|--------|----------------------------|----------------------------|
| Climate class | | T | T |
| Classification of installation and use | | Class 1 Indoor Use Only | Class 1 Indoor Use Only |
| Rated Total Gross Volume (L) | | 145 | 200 |
| Voltage (V) | | 220 - 240 | 220 - 240 |
| Frequency (Hz) | | 50 | 50 |
| Rated Power (W) | | 115 | 105 |
| Rated Current (A) | | 1.1 | 1.05 |
| Noise Level (dB(A)) | | 42 | 42 |
| Refrigerant type | | R600a | R600a |
| Freezer Dimensions (mm) | Height | 845 | 845 |
| | Width | 705 | 905 |
| | Depth | 545 | 545 |
| IP rating | | IPX0 | IPX0 |
| Net/Gross Weight (Kg) | | 28/31 | 32/36 |

Note: Product specifications are subject to change without prior notice.

REPAIRS, SERVICE & WARRANTY

It is hazardous for anyone installing, removing, altering, repairing, servicing or testing of this appliance.

Only an Authorised Service Person can carry out servicing or repairs to this appliance. In Queensland the authorised person must hold a Gas Work Authorisation for hydrocarbon refrigerants, before carrying out servicing or repairs which involve the removal of covers.

IF SERVICE IS REQUIRED:

If you have a problem, and the problem persists after you have made the checks mentioned in this manual, contact:

TECO Australia's Service on 1300 660 037 (8:30am - 4pm Mon~Fri AEST)

For warranty details please visit www.teco.com.au

Service Email : had.service@teco.com.au

Spare Parts : had.parts@teco.com.au



WARRANTY INFORMATION

Teco's warranty information for the product purchased is available at www.teco.com.au.

A copy of the warranty may also be obtained by contacting Teco's Warranty and Service Department on 1300 660 037 during business hours (Mon - Fri 8.30am – 4pm AEST).

To arrange for servicing of a Teco product, please contact our Warranty and Service Department on 1300 660 037 during business hours (Mon - Fri 8.30am – 4pm AEST).

To assist in processing any warranty claim that you may have Teco recommends that you:

1. Complete the following information in relation to your purchase:

Name of retailer: _____

Name of owner: _____

Date of purchase: _____

Model No. : _____

Serial No. : _____

MFG code: _____

2. Retain proof of your purchase for any warranty claim. Ideally this proof of purchase will be the tax invoice issued for your purchase.

3. Complete the following information in relation to the person that installed your Teco appliance (if applicable):

Installer's name: _____

Telephone No.: _____

Licence No.: _____



www.teco.com.au