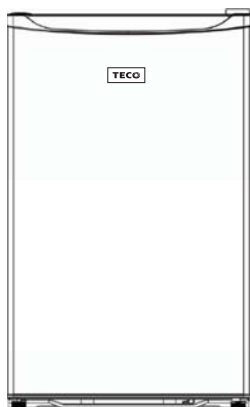




The Comfortable Choice

REFRIGERATOR

User Manual



Model:

**TBF121WMAH
TBF121BMAH
TBF121SMAH**

IMPORTANT NOTE:

Thank you for selecting a TECO quality Refrigerator. Please read this manual carefully before installing or operating your new appliance. Make sure to save this manual for future reference.

The design and specifications are subject to change without prior notice for product improvement.



TABLE OF CONTENTS

Important safety instructions.....	1
Parts and features.....	4
Reversing the door.....	6
Installation instructions.....	6
Operating instructions.....	6
Cleaning.....	7
Defrosting.....	7
Replacement of interior light.....	8
Power failure.....	8
Vacation.....	8
Moving the refrigerator.....	8
Troubleshooting tips.....	9
Specifications.....	10
Repairs, service & warranty.....	11

IMPORTANT SAFETY INSTRUCTIONS

- Thank you for purchasing our product and thank you for placing your confidence in us.
- Read this manual carefully before use. Follow instructions and keep the manual for future reference.
- Follow the operating instructions and safety notices in this manual.
- If any trouble arise, do not attempt to fix it yourself. Please contact TECO service on 1300 660 037 (8:30am - 4pm Mon~Fri AEST).
- This refrigerator is designed and approved for use with flammable R600a refrigerant.
- The appliance is specifically constructed for domestic use only. The appliance has not been designed or manufactured for professional use. TECO declines all responsibility for damage deriving from improper use of the appliance. The refrigerator has undergone the necessary tests on the tightness of the refrigeration circuit and complies with the safety regulations for electrical appliances.
- All images, illustrations and photos contained in this manual are for illustration purposes only and may differ from your appliance.



WARNING ICON

This symbol indicates information concerning your personal safety



CAUTION ICON

This symbol indicates information on how to avoid damaging the appliance.



FLAMMABLE ICON



R600a WARNING LABEL

IMPORTANT SAFETY INSTRUCTIONS



WARNING

R600a Isobutane Refrigerant

- This appliance contains a small quantity of flammable, non-synthetic R600a refrigerant.
- The room for installing the appliance must be at least 1m³ per 8g of refrigerant. The amount of refrigerant in the appliance can be found on the rating plate attached to the appliance.



WARNING

Risk of Fire

- If the refrigerant circuit should become damaged. Avoid open flames and sources of ignition. Disconnect the appliance from the mains power. Thoroughly ventilate the room in which the appliance is situated for several minutes.
- The refrigerator is designed to operate on a single phase power supply within a voltage range of 220~240V/50Hz.
- The refrigeration system contains refrigerant. Do not allow any sharp objects to come in contact with the refrigerant system to avoid damage the refrigerant circuit.
- This product is for indoor use only.
- Do not place electrical items or cooking equipment nearby. Keep away from substances which could cause ignition and good ventilation shall be always maintained.
- Do not place objects on top of the appliance which are magnetic, heavy or filled with water.
- Do not locate multiple portable socket outlets or portable power supplies at the rear of the appliance.
- When positioning the appliance, ensure the supply cord is not trapped or damaged.
- If the supply cord is damaged, it must be replaced by authorised TECO service personal, service agent or similarly qualified persons in order to avoid a hazard.
- Do not store flammable, explosive, volatile and highly corrosive materials in the refrigerator. Containers with flammable gases or liquids can leak at low temperature. There is a risk of explosion or fire.
- Do not splash water on the appliance. It may cause malfunction or electricshock.
- Always switch off and unplug appliance before cleaning.
- Keep ventilation openings, in the appliance enclosure or in the built-in structure, clear of obstruction.
- Do not use mechanical devices or other means to accelerate the defrosting process, other than those recommended by the manufacturer.
- Do not use electrical appliances inside the food storage compartments of the appliance.
- For appliances which use flammable insulation blowing gases, Please keep the products away from the fire or similar glowing substance.

IMPORTANT SAFETY INSTRUCTIONS

- This appliance is intended to be used in household and similar applications such as:
 - staff kitchen areas in shops, offices and other working environments;
 - farm houses and by clients in hotels, motels and other residential type environments;
 - bed and breakfast type environments;
 - catering and similar non-retail applications.



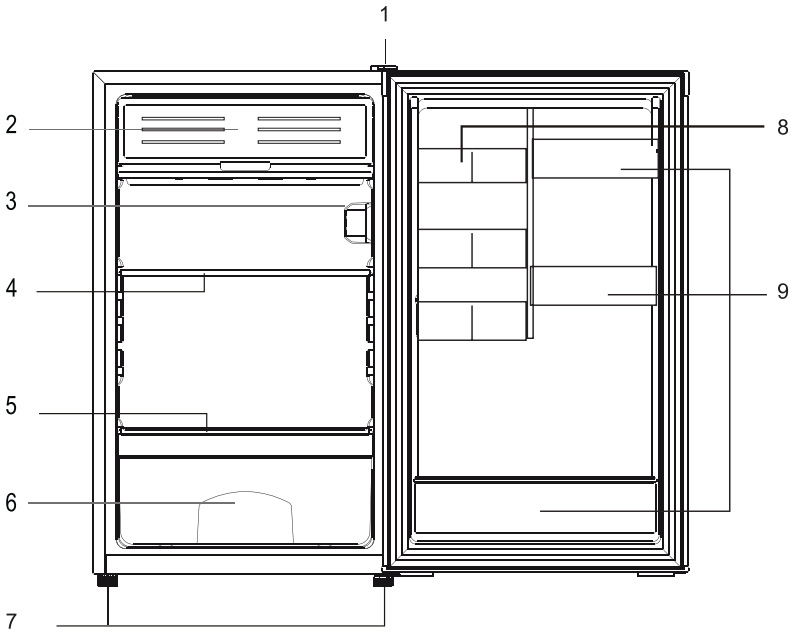
- This appliance is not intended for use by persons (including children) with reduced physical, sensory or mental capabilities, or lack of experience and knowledge, unless they have been given supervision or instruction concerning use of the appliance by a person responsible for their safety.

- Young children should be supervised to ensure that they do not play with the appliance.
- Packing (e.g. wraps, polystyrene etc.) can be dangerous for children. There is a risk of suffocation. Keep packaging materials away from children.
- Contact your local authorities for correct method of disposal. Dispose of all packaging in a responsible manner in accordance with local regulations.



Dispose of old appliances in accordance with local regulations. Remove the doors, cut off the main cable, break or remove spring or bolt catches if fixed to prevent children getting trapped or involve themselves in other dangers.

PARTS AND FEATURES



- 1. Door Hinge
- 2. Chiller Section
- 3. Interior Light and Thermostat Control
- 4. Adjustable Glass Shelf
- 5. Glass Crisper Cover
- 6. Vegetable Crisper
- 7. Leveling Feet
- 8. Can Rack
- 9. Door Tray

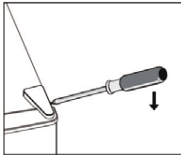
NOTE: The illustration in this manual are for reference only. Actual configuration will depend on the physical product.

REVERSING THE DOOR

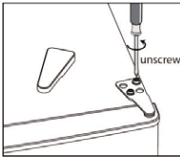
Tool required: Philips screwdriver, Flat bladed screw driver, Hexagonal spanner.

- Ensure the unit is unplugged and empty.
- To take the door off, it is necessary to tilt the unit backwards. You should rest the unit on something solid so that it will not slip during the door reversing process.
- All parts removed must be saved to do the re-installation of the door.
- Do not lay the unit flat as this may damage the coolant system.
- It is better that 2 people handle the unit during assembly.

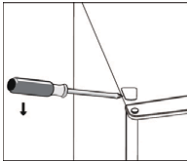
1. Remove the top right hinge cover.



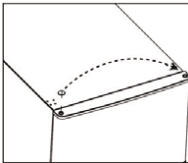
2. Undo the screws. Then remove the hinge bracket.



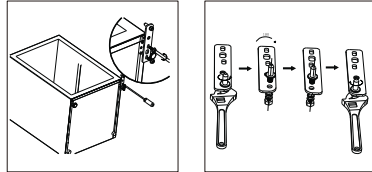
3. Remove the top left screw cover.



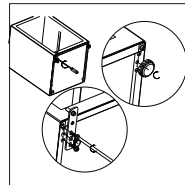
4. Move the core cover from left side to right side, then lift the upper door and place it on a padded surface to prevent it from scratching.



5. Unscrew and remove the bottom hinge pin, turn the bracket over and replace it.



6. Refit the bracket fitting the bottom hinge pin. Replace both adjustable feet.

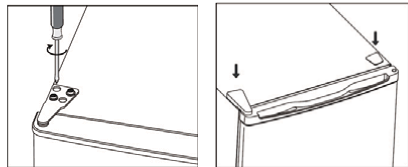


7. Place the door back on. Ensure the door is aligned horizontally and vertically so that the seals are closed on all sides before finally tightening the top hinge.

8. Insert the hinge bracket and screw it to the top of the unit.

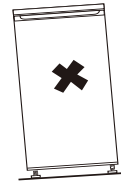
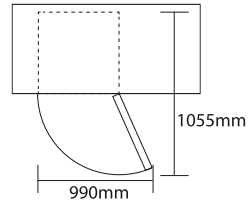
9. Use a spanner to tighten it if necessary.

10. Put the hinge cover and screw cover back.



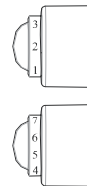
INSTALLATION INSTRUCTIONS

1. Before using the refrigerator for the first time, remove all of the packing materials, including the foam base and adhesive tape holding accessories in place.
2. The refrigerator should be located on a firm, flat surface that is strong enough to support the refrigerator when it is fully loaded.
3. Choose a location that is not exposed to direct sunlight, high temperatures, heat sources such as a stove or radiator, or in a moist area. Do not choose a location where the temperature will go below 12°C as this could cause the refrigerator to not function properly.
4. Leave a minimum of 50mm between each side of the appliance and the wall. The top of the appliance should have a minimum of 100mm clearance. This allows for proper air circulation. This appliance is intended to be free-standing and should not be built-in or placed in a recessed area.
5. The refrigerator legs must be adjusted during installation in order to function properly. The leveling legs on the front corners can be adjusted by turning clockwise to raise the appliance, and counter-clockwise to lower it. Be sure to have the appliance slope slightly backward to ensure that the door closes tightly.



OPERATING INSTRUCTIONS

1. Allow refrigerator to stand up right for 4 hours before using.
2. Plug into a grounded outlet.
3. Use the control dial to control the temperature of the refrigerator manually. As shown in Figure, The numbers shown on the dial does not represent the temperature, instead the larger number is, cooler the interior temperature. To stop the cooling, turn the dial to "0". Do not switch off the power.
 - Turn the knob to number "4" for normal use.
 - Turn the knob to number "5-7", when cooler temperature needed.
4. Turn the knob to number "1-3", when warmer temperature needed. Food should be kept in a sealed container to prevent odors or drying.
5. Hot food should be cooled down before placing into the appliance to prevent an increase in interior temperature and power consumption. Adding food in too soon will impact the performance.
6. Reducing the frequency of door opening can lower power consumption.



CLEANING



The appliance should be maintained and cleaned frequently. For your safety, unplug the appliance from the mains power source before performing any maintenance. Never clean the appliance with a steam cleaner. Moisture could accumulate in electrical components, danger of electrical shock! Hot vapors can lead to the damage of plastic parts. The appliance must be dry before it is placed back into service.

Note: Ethereal oils and organic solvents can attack plastic parts, e.g. lemon juice or the juice from orange peel, butyric acid, cleanser that contain acetic acid.

- Do not allow such substances to come into contact the appliance parts.
- Do not use any abrasive cleaners.
- Remove the food from the refrigerator. Store them in a cool place, well covered.
- Switch the appliance off and unplug from the mains.
- Clean the appliance and the interior accessories with a cloth and lukewarm water. After cleaning wipe with fresh water and rub dry.
- After everything is dry place appliance back into service.

DEFROSTING

Frost build-up on the walls of the chiller section will increase energy consumption and reduce the efficiency of the appliance. Defrost the section whenever the frost reaches a thickness of 5mm.

1. Remove the food from the refrigerator. Store them in a cool place, well covered.
2. Switch the appliance off and unplug from the mains.
3. If your model has a drip tray, be sure to place it under the ice making compartment to collect water. It may be necessary to empty the drip tray during the defrosting process.
4. The defrosting process can take several hours. Open the door to speed up the process.
5. When defrosting is completed, wipe the compartment with a soft cloth to remove any remaining water, dry the interior thoroughly.
6. Reset the refrigerator to the desired temperature.
7. Refer to Operating Instructions.



ATTENTION: Do not use sharp or pointed objects to remove frost or ice from the surfaces of the ice making compartment. This can cause damage to the compartment walls and cooling coils, and will void the warranty.

REPLACE THE INTERIOR LIGHT



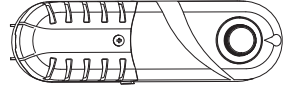
WARNING

For your safety, unplug the appliance from the mains power source before performing any maintenance.

Lamp specification is listed in the rating label.

Follow below process to replace the lamp:

1. Set the temperature regulation knob at number "0" to switch off the appliance.
2. Unplug the appliance to make sure the appliance is disconnected from the main power supply.
3. Remove the screw of the lamp cover.
4. Pull the lamp cover out.
5. Unscrew the lamp.
6. Fit new lamp according to the opposite direction then replace the lamp cover the screw.
7. Plug in the appliance and regulate the knob to the right position.



POWER FAILURE

When a power failure occurs, the refrigerator can normally store food for several hours. Do not put additional food into the appliance during a power failure, and do not operate door. Disconnect the plug from the outlet, and reconnect when the power has been restored. Always inspect for, and discard, any spoiled or thawed food in the refrigerator before resuming use of the appliance.

VACATION

Before leaving on any vacation, remove food that could spoil while you are gone. If you plan to be gone for an extended period of time, we recommend that all of the food should be removed from the appliance and it should be turned off and unplugged from the outlet. Clean the interior according to the directions provided in the CLEANING section of this manual, and leave the door open.

MOVING THE REFRIGERATOR

1. Turn off the refrigerator and unplug from the outlet.
2. Remove all food; securely tape down all loose items inside.
3. Tape the door shut.
4. Do not lift or pull the door or door handle during transportation.
5. When moving, the appliance cannot be tilted over 45 degrees as possible damage to the sealed system could occur.
6. Take care to avoid strong vibration or impact to the appliance.

TROUBLESHOOTING TIPS



For your safety, unplug the appliance from the mains power source. Only an Authorised Service Person can carry out servicing or repairs to this appliance. If you have a problem, and the problem persists after you have made the checks mentioned in this manual, contact: TECO Australia's Service on 1300 660 037 (8:30am - 4pm Mon~Fri AEST)

Problem	Possible cause	Solution
Appliance does not work	Thermostat control is set at number "0".	Set the thermostat control to larger number.
	Mains plug is not plugged in or is loose.	Insert mains plug.
	Fuse has blown or is defective.	Check fuse, replace if necessary by authorised service person.
	Socket is defective.	Mains malfunctions are to be repaired by an electrician.
Appliance seems too warm and/or food does not seem to cold	Temperature is not properly adjusted.	Please look in the initial temperature setting section.
	Door was open for an extended period.	Reduce the door opening times and period.
	A large quantity of food was placed in the appliance within the last 24 hours.	Turn the temperature regulation to a colder setting temporarily.
	The appliance is near a heat source.	Please look in the installation location section.
Appliance too cold	Temperature is set too cold.	Turn the temperature regulation knob to a warmer setting temporarily.
Unusual noises	Appliance is not level.	Re-adjust the feet.
	The appliance is touching the wall or other objects	Move the appliance slightly.
	A component, e.g. a pipe, on the rear of the appliance is touching another part of the appliance or the wall.	If necessary, carefully bend the component out of the way.

The following are normal conditions that can be encountered during the operation of this appliance:

- The flow of refrigerant through the coils can cause a noise.
- The sides of the appliance may become warm as a result of the cooling function.

SPECIFICATIONS

Model Number		TBF121WMAH TBF121BMAH TBF121SMAH
Capacity (L)	Refrigerator	121
	Freezer	-
Voltage (V)		220 - 240
Frequency (Hz)		50
Rated Input Power (W)		90W
Rated Current (A)		0.6
Voice [dB(A)]		≤41
Refrigerant		R600a/32g
Climate class		T
Group		2
Electric shock protection type		I
Interior Lamp		Max 10W
Net Weight (kg)		23
Dimension (mm)	Width	500
	Depth	560
	Height	840

E&OE

NOTE: This product is subject to continuous improvement, specifications are subject to change without prior notice. This product was tested in accordance with Electrical safety of electrical appliances AS/NZS 60335, Energy consumption and performance AS/NZS 4474.1 and Energy labeling and minimum energy performance AS/NZS 4474.2.

REPAIRS, SERVICE & WARRANTY

It is hazardous for anyone installing, removing, altering, repairing, servicing, testing or certifying the gas system of a gas device (i.e. charging, discharging or breaking into the refrigeration system that uses hydrocarbon refrigerants).

Only an Authorised Service Person can carry out servicing or repairs to this appliance. In Queensland the authorised person must hold a Gas Work Authorisation for hydrocarbon refrigerants, before carrying out servicing or repairs which involve the removal of covers.

IF SERVICE IS REQUIRED

If you have a problem, and the problem persists after you have made the checks mentioned in this manual, contact:
TECO Australia's Service on 1300 660 037
(8:30am - 4pm Mon~Fri AEST).

For warranty details please visit

www.teco.com.au

Service Email : had.service@teco.com.au

Spare Parts : had.parts@teco.com.au



WARRANTY INFORMATION

Teco's warranty information for the product purchased is available at www.teco.com.au.

A copy of the warranty may also be obtained by contacting Teco's Warranty and Service Department on 1300 660 037 during business hours (Mon - Fri 8.30am - 4pm AEST).

To arrange for servicing of a Teco product, please contact our Warranty and Service Department on 1300 660 037 during business hours (Mon - Fri 8.30am - 4pm AEST).

To assist in processing any warranty claim that you may have Teco recommends that you:

1. Complete the following information in relation to your purchase:

Name of retailer: _____

Name of owner: _____

Date of purchase: _____

Model No. : _____

Serial No. : _____

MFG code: _____

2. Retain proof of your purchase for any warranty claim. Ideally this proof of purchase will be the tax invoice issued for your purchase.

3. Complete the following information in relation to the person that installed your Teco appliance (if applicable):

Installer's name: _____

Telephone No.: _____

Licence No.: _____



www.teco.com.au